

Schnitt-Griffy® HS 865/SE/SE+



The **Schnitt-Griffy** models **HS 865** are handy and robust cutters with double grippers.

The timbers are inevitably embraced by two crossing knives and held securely during cutting by the 4 gripper arms. By individually mounted grippers and a serrated frame fixation the holding power is greater than previously and thus your safety is significantly improved.

A hydraulic valve controls the grippers so that they close before cutting and keep the clippings safely. The cut wood can then be deposited exactly where you want it to be.

A carrier vehicles wheel excavators and crawler excavators have proved particularly useful.

Our **Schnitt-Griffy HS 865 SE** comes standard with a swivel unit. The pivoting angle of 2 x 60° makes it possible to cut off branches accurately and to deposit the clippings along the excavator's side as well.

Additional equipment for sorting and loading tasks

The cutting function of the knives can be stopped by fitting a cut-off valve, and the grippers can be operated on their own. This gripper mode is very beneficial for sorting and loading tasks!

The function is also available for retrofitting.

Our newest model **Schnitt-Griffy HS 865 SE +** is additionally equipped with a collecting gripper. The collecting gripper allows the collection of small branches and bushes. You do not have to put down the clippings separately any more. This advantage saves worktime and operating costs.

The collecting gripper has a collecting capacity up to 250 mm diameter.

Our models **Schnitt-Griffy HS 865/865 SE** and **HS 860/HS 860 SE** can be upgraded with a collecting gripper. This modification can only be made on site in our factory.

The Schnitt-Griffy is available too without swivel unit!

Applications:

On the road, by the side of rivers, in the forest, for land-scraping and landscape conservation, for Common Osiers (willow trees), on railways, for overland power lines, and much more.



Hans Habbig Maschinenbau
Ziegelhütte 1 · D-36381 Schlüchtern
Tel.: +49 6661 71347 · Fax: +49 6661 5922
info@hans-habbig.com · www.hans-habbig.com

HH **HANS HABBIG**
M **MASCHINENBAU**

Schnitt-Griffy® HS 865/SE/SE+



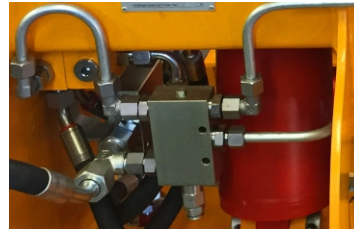
Schnitt-Griffy HS 865 SE+ in action



Schnitt-Griffy HS 865 SE+



Schnitt-Griffy HS 865 SE+ in gripper mode



Additional equipment overcenter valve with overload safety device

With installation of the overcenter valve, it is no longer important whether the spool valve of the excavator hold a tight seal. The grab remains closed until the open command is given. The overcenter valve is also available for retrofitting for all models.

TECHNICAL SPECIFICATIONS

Length × Width × Height:	1700 × 800 × 1150 mm
Weight without attachment:	HS 865 SE: approx. 795 kg (approx. 720 kg without SE) HS 865 SE +: approx. 880 kg (approx. 805 kg without SE)
Opening width:	approx. 660 mm
Cutting performance:	alder approx. 320 mm, oak approx. ca. 230 mm
Pivoting angle:	approx. 2 x 60°
Torque:	at 0°: 30 kNm, at 60°: 15 kNm
Connection main working circuit:	1 x double-action, pressure 300 bar, oil flow 100 to 110 l/min (Primary and secondary safety switch necessary!)
Connection swivel unit:	1 x double action, pressure 200 bar, oil flow 20 to 40 l/min (Primary and secondary safety switch necessary!)
Recommended excavator size:	from 11–18 to
Minimum lifting capacity (mass):	1,6 to

Technical modifications reserved



**HANS HABBIG
MASCHINENBAU**

Ziegelhütte 1
D-36381 Schlüchtern
Telefon: 06661-71347
Fax: 06661-5922
info@hans-habbig.com
www.hans-habbig.com

Distribution by: