

# The Schnitt-Griffy®

Cutting and clearing in one work step

Hydraulic hedge shears with extraction gripper



**HS 760 SE**  
with integrated swivel unit



**HS 650 SE**  
with integrated swivel unit



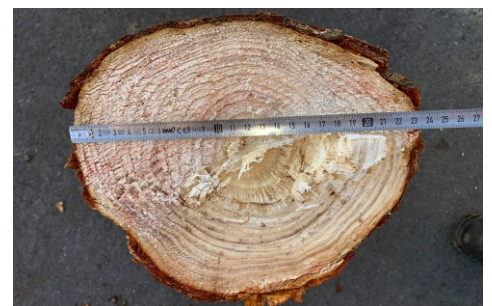
**HS 650**

The device can be used for a wide variety of applications: on the road, at forest waters, for landscaping, for landscape conservation, for Common Osiers (willow trees), on railways, for overland power lines, and much more.

The lumbers are embraced by two crossing knives. Once the tips of these knives are closed, the wood can no longer escape. The gripper holds the wood in place as a bundle

even while the wood is being cut. The cut wood is then lifted from the retainer clamp, allowing it to be laid down at its intended destination.

When the Schnitt-Griffy is attached to a wheel or track excavator, the excavator's operator, protected from rain and frost, can process the wood in a convenient manner. An additional load-holding valve for the gripper is available as optional equipment.



Cross section



**HS 850**

The performance of the Schnitt Griffy depends on the machine on which it is mounted and on the conditions on site. Wheel and chain excavators have proven to be particularly well-suited for use with the Schnitt-Griffy.

The Schnitt-Griffy's hydraulic connection only requires a double-action controller including the corresponding lines connecting to the boom of the excavator. The control valve must be tight and be equipped to protect against pressure loss.

We developed a swivel unit designed for use with the shear types HS 850 and HS 750 S. The unit is used to expand your work area and, at the same time, helps improve security, as the unit allows you to access the cut wood more accurately. The swivel unit can easily be installed between the machine and the mounting console. This makes it possible to also mount the swivel unit onto older machines. The connection requires an additional, double-action control circuit.

### Technical Specifications

	HS 650 SE	HS 650	HS 760 SE	HS 760	HS 850
<b>Length</b> in mm (approx.)	1,350	1,350	1,600	1,600	1,750
<b>Width</b> in mm (approx.)	800	800	830	830	850
<b>Height</b> in mm (approx.)	1,100	1,100	1,100	1,100	1,150
<b>Weight</b> in kg (approx.)	315	270	400	365	475
<b>Cutting performance (alder)</b> in mm (approx.)	200	200	230	230	280
<b>Cutting performance (oak)</b> in mm (approx.)	160	160	180	180	210
<b>Opening width</b> in mm (approx.)	550	550	670	670	660
<b>Oil flow Q</b> in liters/min	60 – 100	60 – 100	60 – 100	60 – 100	80 – 100
<b>Oil pressure P</b> in bar	200 – 220	200 – 220	250 – 270	250 – 270	270 – 300
<b>Recommended Excavator size</b> in t	3 – 7	3 – 7	5 – 12	5 – 12	11 – 18
<b>Lifting performance</b> in kg (approx.)	700	650	900	850	1,500
<b>Torque</b> in Nm (approx.)	5,500		5,500		
<b>Pivoting angle</b> (approx.)	2 x 55°		2 x 55°		
<b>Oil flow Q</b> in liters/min	20 – 40		20 – 40		
<b>Oil pressure P</b> in bar	180 – 200		180 – 200		

### Technical Specifications

	SE 55.85 and 55.75
<b>Length</b> in mm (approx.)	460
<b>Width</b> in mm (approx.)	420
<b>Height</b> in mm (approx.)	680
<b>Weight</b> in kg (approx.)	130
<b>Max. lifting moment</b> in Nm (approx.)	max. 10,000 650 kg wood weight
<b>Torque</b> in Nm (approx.)	5,500
<b>Pivoting angle</b> (approx.)	2 x 55°
<b>Oil flow Q</b> in liters/min	20 – 40
<b>Oil pressure P</b> in bar	180 – 200

Technical modifications reserved



**SE 55.85**



**Bolted mounting console**

Distributor:



**HANS HABBIG  
MASCHINENBAU**

Ziegelhütte 1

D-36381 Schlüchtern

Tel.: +49 6661 71347

Fax: +49 6661 5922

info@hans-habbig.com

www.hans-habbig.com